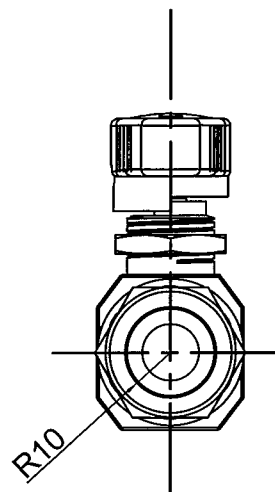
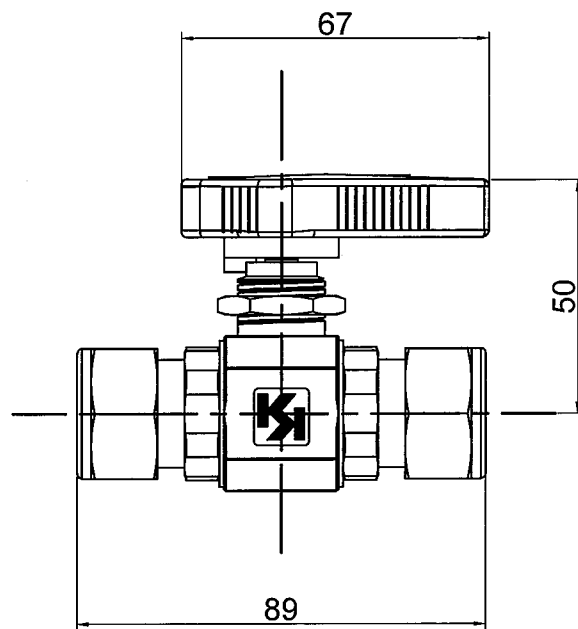
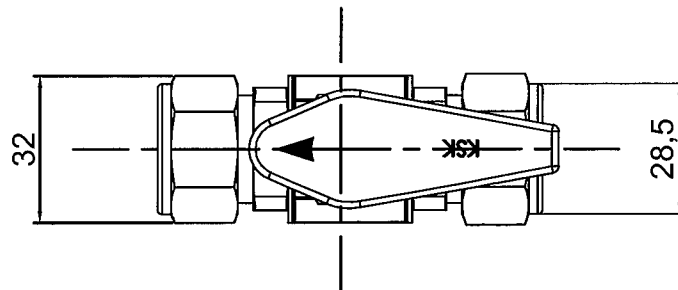
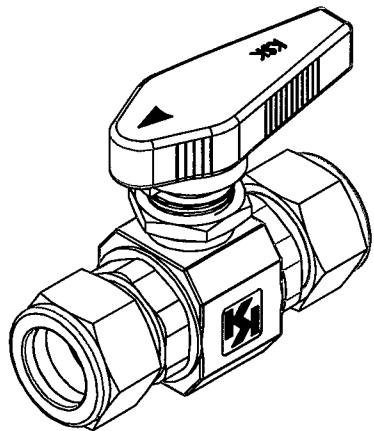


KSK 12BC-SW-SS



SPECIFICATION

BODY SIZE	3 / 4 "
END CONNECTION	LET-LOK / FU-LOK
MAX.WORKING PRESSURE	5.1Mpa
WORKING TEMP.RANGE	-10 to 80° C
HELEAK	INBOARD $\leq 1.0 \times 10^{-6}$ atm.cc/sec He
PATE	ACROSS THE SEAT $\leq 1.0 \times 10^{-6}$ atm.cc/sec He

UNIT : mm

ITEM	PARTS	Q.TY	MATERIALS
1	BODY	1	CF8M
2	CAP	2	SUS 316
3	BALL	1	SUS 316
4	BALL SEAT	2	PTFE
5	CAP O-RING	2	VITON
6	STEM	1	SUS 316
7	THRUST WASHER	1	PTFE
8	STEM PACKING	1	PTFE
9	GLAND NUT	1	SUS 316
10	HANDLE	1	POM
11	PANEL	1	SUS 316
12	STEM O-RING	1	VITON

12BC-SW-SS

Output drawing: A4
1 : 1.63 (mm)

3RD ANGLE		HAM-LET MOTOYAMA JAPAN Member of HAM-LET Group	
CHECKED	DATE	2011/11/23	TYPE
DESIGNER	SCALE		ITEM NO. 12BC-SW-SS
DRAWN	P.R. Wans	DESCRIBE	