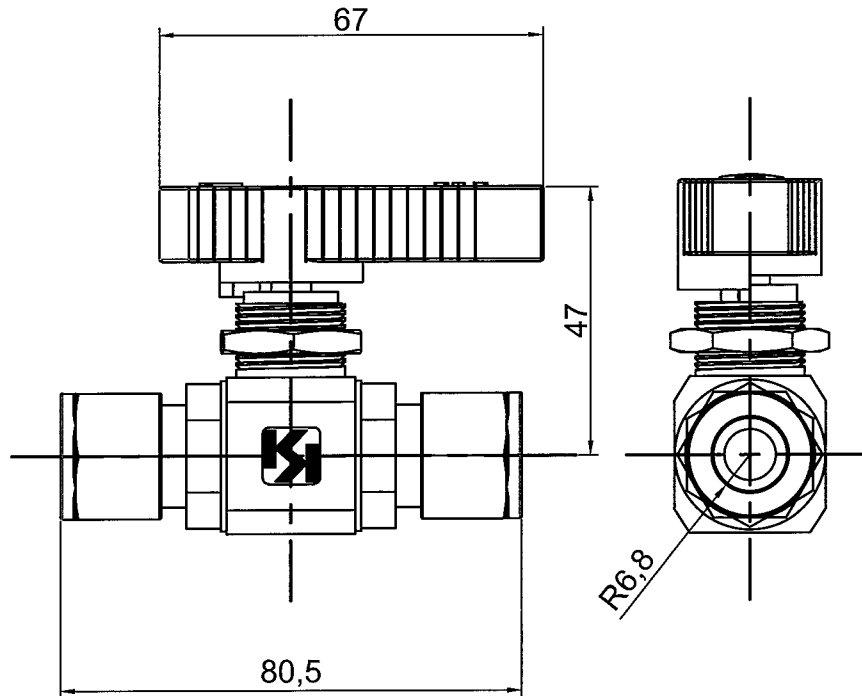
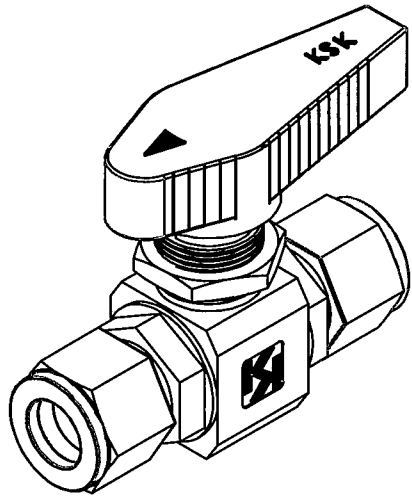
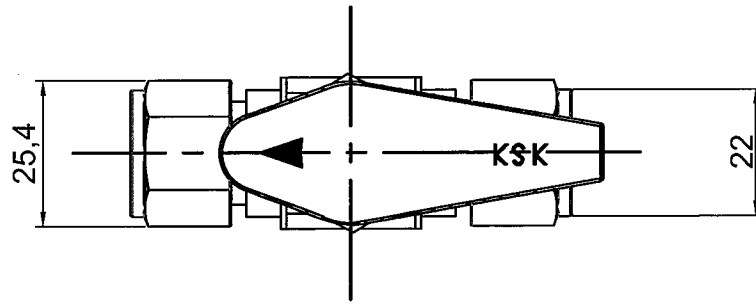


KSK 8BC-SW-SS



SPECIFICATION

BODY SIZE	1 / 2 "
END CONNECTION	LET-LOK / FU-LOK
MAX.WORKING PRESSURE	5.1Mpa
WORKING TEMP.RANGE	-10 to 80° C
HELEAK INBOARD	$\leq 1.0 \times 10^{-6}$ atm.cc/sec He
PATE ACROSS THE SEAT	$\leq 1.0 \times 10^{-6}$ atm.cc/sec He

UNIT : mm

ITEM	PARTS	Q.TY	MATERIALS
1	BODY	1	CF8M
2	CAP	2	SUS 316
3	BALL	1	SUS 316
4	BALL SEAT	2	PTFE
5	CAP O-RING	2	VITON
6	STEM	1	SUS 316
7	THRUST WASHER	1	PTFE
8	STEM PACKING	1	PTFE
9	GLAND NUT	1	SUS 316
10	HANDLE	1	POM
11	PANEL	1	SUS 316
12	STEM O-RING	1	VITON

8BC-SW-SS

3RD ANGLE



HAM-LET MOTOYAMA JAPAN

Member of HAM-LET Group

CHECKED

DATE

2011/11/23

TYPE

DESIGNER

SCALE

ITEM NO.

8BC-SW-SS

DRAWN

P.R.Wan

DESCRIBE

Output drawing: A4

1 : 1.31 (mm)

